



ATHENA

Access to cultural heritage
networks across Europe

eContentplus

Gordon McKenna
Collections Trust

ATHENA Project

Europeana-UK Conference
London, 26 May 2009





ATHENA

Access to cultural heritage
networks across Europe

Project Overview

Length (worth) : 30 months (€5.25m)

Background: Successor to Minerva (and MICHAEL)

Objectives:

- **Support and encourage the participation of museums in Europeana;**
 - **Coordinate standards and activities of museums across Europe;**
 - **Identify digital content present in European museums;**
 - **Work with other projects (not museums) contributing to Europeana;**
 - **Develop a 'plug-in' to be integrated within Europeana museum content.**
-



ATHENA

Access to cultural heritage
networks across Europe

Partners

Coordinator: Italy

Content providers : Belgium, Bulgaria, Cyprus, Czech Republic, Germany (x2), Estonia, Finland, France, Greece, Hungary (x2), Israel, Italy, Luxembourg, Latvia, Netherlands, Poland, Romania, Slovenia, Slovak Republic, UK

Dissemination: Azerbaijan, Belgium (x2), Netherlands, Russia, Slovak Republic

Evaluation: Italy

Technology provider: Czech Republic, France, Greece (x2), Sweden





ATHENA

Access to cultural heritage
networks across Europe

UK Providers

- **Bristol City Council – c3000 images**
- **Fitzwilliam Museum – c66,000 images**
- **Royal Albert Memorial Museum and Art Gallery – c5000 images**
- **Victoria and Albert Museum - c43,500 images**
- **Wiltshire Archaeological and Natural History Society (WANHS) - c7000 images**
- **English Heritage - c70,000 images, c50 photo essays**

TOTAL – c200,000



ATHENA

Access to cultural heritage
networks across Europe

Work packages

- **WP1:** *Project management, monitoring and evaluation*
- **WP2:** *Awareness and dissemination*
- **WP3:** *Identifying standards and developing recommendations*
- **WP4:** *Integration of existing data structure into Europeana*
- **WP5:** *Coordination of contents*
- **WP6:** *Analysis of IPR issues and definition of possible solutions*
- **WP7:** *Development of plug-in to be integrated within Europeana*



ATHENA

Access to cultural heritage
networks across Europe

WP3 Tasks and *deliverables* 1

- **Collection of data on the application of standards by European museums and other collection level access initiatives:**
 - *Report on existing standards applied by European museums*
- **Identification of standards and common harvesting formats and the publication of recommendations:**
 - *Recommendations and best practice report regarding the application of standards, including recommendations for a harvesting format and fact sheets for dissemination*
- **Review of requirements and specification of tools to support the conversion of proprietary museum data:**
 - *Specification for conversion tool*



ATHENA

Access to cultural heritage
networks across Europe

WP3 Tasks and *deliverables* 2

- **Assessment of the requirement for persistent unique object, collection and institution identifiers:**
 - *Assessment of requirements for persistent identification of objects, collections and institutions*
 - *Technical and policy infrastructure to support persistent identifiers*
- **Development of tools for the adaptation of proprietary museum formats to the common harvesting format used by Europeana:**
Specific tools to be used for conversion and adaptation of proprietary museum data



ATHENA

Access to cultural heritage
networks across Europe

ATHENA standards survey

- ***Content provider information;***
- ***Collection description;***
- ***Digital object metadata;***
- ***Information scheme(s) (metadata);***
- ***Intellectual Property Rights (including copyright);***
- ***Geographic name terminology and co-ordinate standards;***
- ***Date format and time period terminology;***
- ***Subject terminology;***
- ***Person and organisation terminology;***
- ***Contributing to Europeana.***



ATHENA

Access to cultural heritage
networks across Europe

Content providers

Organisation type	Number of organisations	(%)
Museum	39	(41.9)
Library	4	(15.1)
Archive	9	(9.7)
Sound archive	2	(2.2)
Aggregator	6	(6.5)
Other	33	(35.5)



ATHENA

Access to cultural heritage
networks across Europe

Survey content numbers

Collection type	Amount of content	(%)
Museum	1,295,842	(37.6)
Library	518,685	(15.1)
Archive	713,948	(20.7)
Sound archive	50,000	(1.5)
Aggregation	29,226	(0.8)
Other	606,134	(17.6)
Mixed*	229,750	(6.7)



ATHENA

Access to cultural heritage
networks across Europe

Content themes

Theme	Number of collections
Fine art	18
Local history	12
Archaeology	10
Archives	6
Decorative art	5
Literature	5
Natural science	4
Industry	4
World cultures	4



ATHENA

Access to cultural heritage
networks across Europe

Content time periods

Centuries	Number of collections
20 th and 21 st	51
19 th	48
18 th	35
17 th	29
16 th	26
15 th	26
14 th	23
13 th	20
12 th	19
11 th	19
[Earlier]	19



ATHENA

Access to cultural heritage
networks across Europe

Content languages

Country	Major languages: Max-Min %	Other languages: Max-Min %
Belgium	Dutch: 100-25 French: 100-65	English: 5 German: 5
Estonia	Estonian: 85	English: 5 German: 5 Russian: 5
Finland	Finnish: 100-60 Swedish: 60-40	English [?] Latin [?]
France	French: 100	[some other and regional languages]
Hungary	Hungarian: 100	
Israel	English: 60 German: 90 Hebrew: 40-10	Aramaic: [?] French: [?] Latin: [?]
Italy	Italian: 100-70	'Other': 30
Romania	Romanian: 100-90 Latin: 95-94	French 10-2 German: 5-2 Hungarian: 2
Sweden	Swedish: 100-60	English: [?] German: [?] French: [?] Spanish: [?]
United Kingdom	English: 100	



ATHENA

Access to cultural heritage
networks across Europe

Text content

Text type	Number of collections : %
[All types]	42 : 52.4%
PDF	16 : 19.0%
Word	15 : 17.9%
XML	14 : 16.7%
HTML	12 : 14.3%
Plain text	8 : 9.5%
RTF	3 : 3.6%
DjVu	1 : 1.2%
SGML	1 : 1.2%



ATHENA

Access to cultural heritage
networks across Europe

Image content

Image type	Number of collections: %
[All types]	78: 92.9%

JPEG	78: 92.9%
TIFF	40 : 47.6%
GIF	5 : 6.0%
BMP	4 : 4.8%
PNG	2 : 2.4%
DjVu	1 : 1.2%
RAW	1 : 1.2%
IMGF	1 : 1.2%



ATHENA

Access to cultural heritage
networks across Europe

Audio content

Audio type	Number of collections: %
[All types]	9 : 10.7%
MP3	9 : 10.7%
WAV	6 : 7.1%
WMA	2 : 2.4%
AIFF	1 : 1.2%
MPG	1 : 1.2%
AudioCD	1 : 1.2%



ATHENA

Access to cultural heritage
networks across Europe

Video content

Video type	Number of collections: %
[All types]	12 : 14.3%

MPG	7 : 8.3%
AVI	6 : 7.1%
FLV (Flash Video Format)	6 : 7.1%
MOV (Quicktime)	4 : 4.8%
MP4	3 : 3.6%
WMV (Windows Media Video)	3 : 3.6%
SWF (Flash Movie)	2 : 2.4%
DVD Video	1 : 1.2%



ATHENA

Access to cultural heritage
networks across Europe

Technical standards conclusions

- ***Museums are using the expected technical standards;***
- ***ATHENA recommends:***

Technical Guidelines for Digital Cultural Content Creation Programmes

<http://www.minervaeurope.org/interoperability/technicalguidelines.htm>

Advantages:

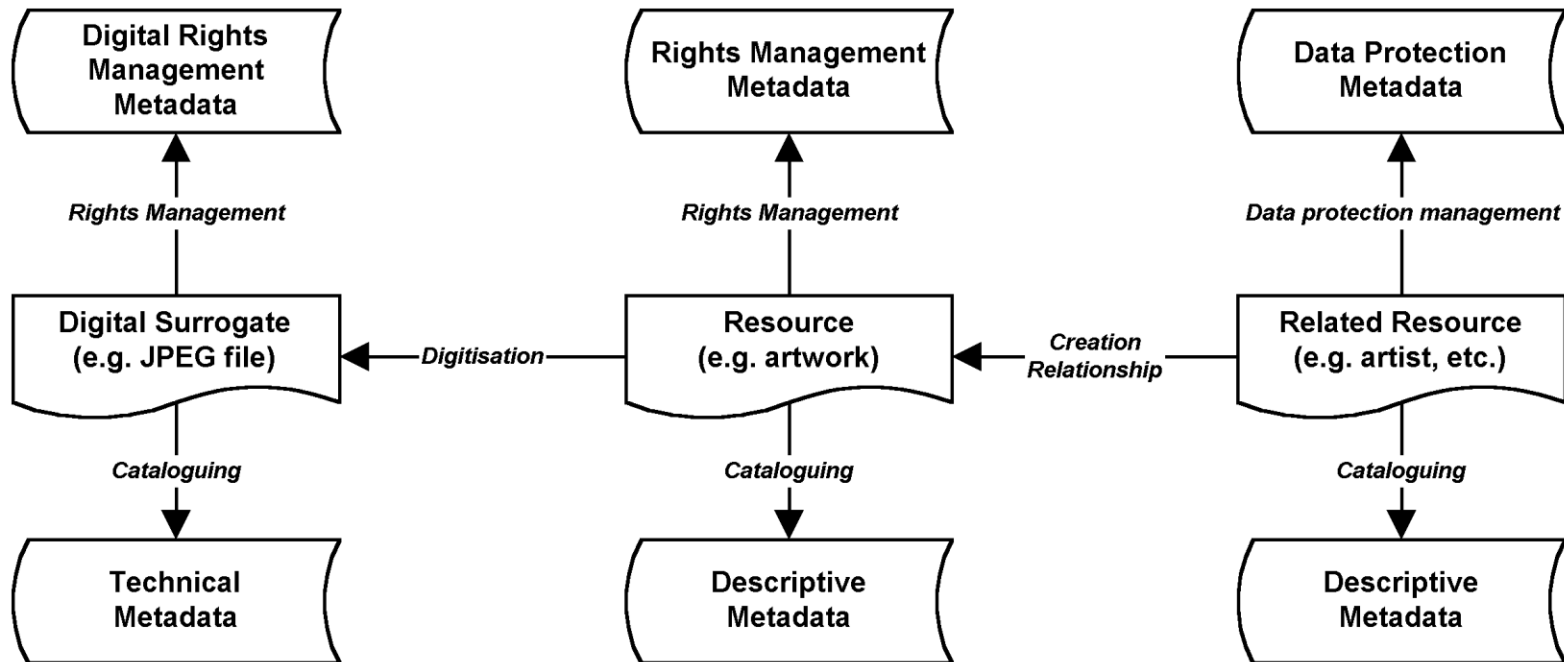
- ***Multilingual***
- ***Written for a general cultural sector audience***
- ***Updated***



ATHENA

Access to cultural heritage
networks across Europe

Metadata





Information schemes (metadata)

Standard [<i>domain audience</i>]	All
-------------------------------------	-----

Provider Type					
Museums	Libraries	Archives	Sound Archives	Aggregators	Other

Museum

CDWA	1
museumdat	4
Object ID	7
SPECTRUM	15

1	0	0	0	0	0
4	0	0	0	0	0
6	0	0	0	1	0
13	0	2	0	1	1

Archive

EAD	4
ISAD(G)	6

1	2	2	1	2	1
3	1	5	1	1	1

Library

MARC	6
METS	1
MODS	3

2	2	0	0	2	0
0	1	0	0	0	0
1	1	0	0	1	0

General heritage

CIDOC-CRM	9
VRA	1

3	1	2	0	2	4
1	0	0	0	0	0

Resource Discovery

Dublin Core	22
-------------	----

10	3	5	2	4	7
----	---	---	---	---	---

Other [mostly in-house]	23
-------------------------	----

11	3	7	1	4	7
----	---	---	---	---	---



ATHENA

Access to cultural heritage
networks across Europe

Metadata adaption

Standard [<i>domain audience</i>]	Used	Adapted
-------------------------------------	------	---------

Museum

CDWA	1	0
museumdat	4	1
Object ID	7	3
SPECTRUM	15	4

Archive

EAD	4	3
ISAD(G)	6	1

Library

MARC	6	5
METS	1	0
MODS	3	2

General heritage

CIDOC-CRM	9	7
VRA	1	0

Resource Discovery

Dublin Core	22	14
-------------	----	----

TOTAL	79	40
--------------	-----------	-----------



ATHENA

Access to cultural heritage
networks across Europe

Metadata conclusions

- ***Museum metadata standards are not much used by the other domains;***
- ***Museums use other domain metadata standards;***
- ***Dublin Core is a popular metadata scheme;***
- ***A significant number of museums (and organisations from other domains) use an in-house developed metadata schemes;***
- ***About half of collections are using adapted standards.***



ATHENA

Access to cultural heritage
networks across Europe

Important addresses

<http://www.athenaeurope.org>

<http://www.minervaeurope.org/interoperability/technicalguidelines.htm>

gordon@collectionstrust.org.uk