



ATHENA

Access to cultural heritage
networks across Europe

eContentplus

Gordon McKenna
Collections Trust (UK)

LIDO – Light Information Describing
Objects

ATHENA-STACHEM Workshop
Florence, 22 April 2010





ATHENA

Access to cultural heritage
networks across Europe

Overview

-
- **Why LIDO?**
 - **What is LIDO?**



ATHENA

Access to cultural heritage
networks across Europe

The Horrible Truth?





ATHENA

Access to cultural heritage
networks across Europe

Museums and Computers

Museums:

- **Tell stories**
- **About 'physical objects' (no definition)**
- **Connections to other 'entities' are important**

Computers are:

- **Stupid**
- **Fast**



ATHENA

Access to cultural heritage
networks across Europe

A Story – Official





ATHENA

Access to cultural heritage
networks across Europe

A Story – Personal

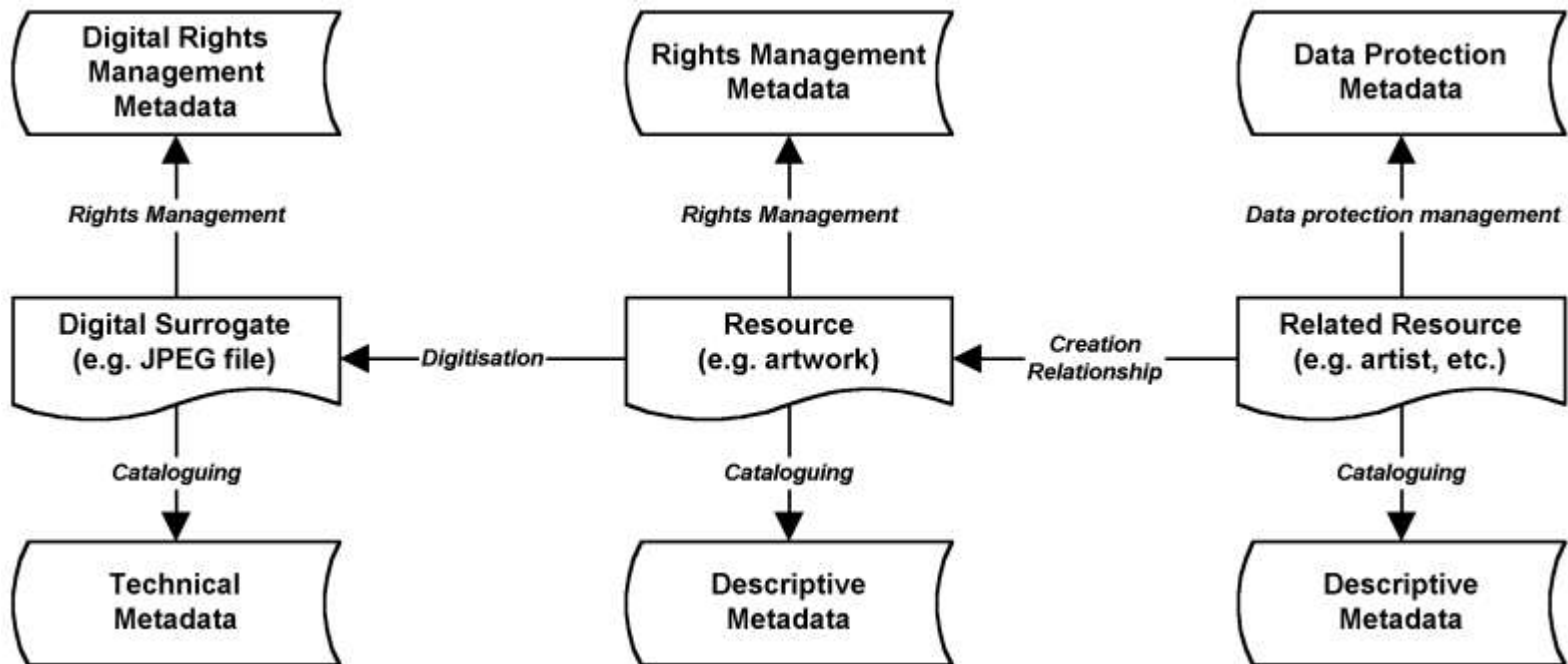




ATHENA

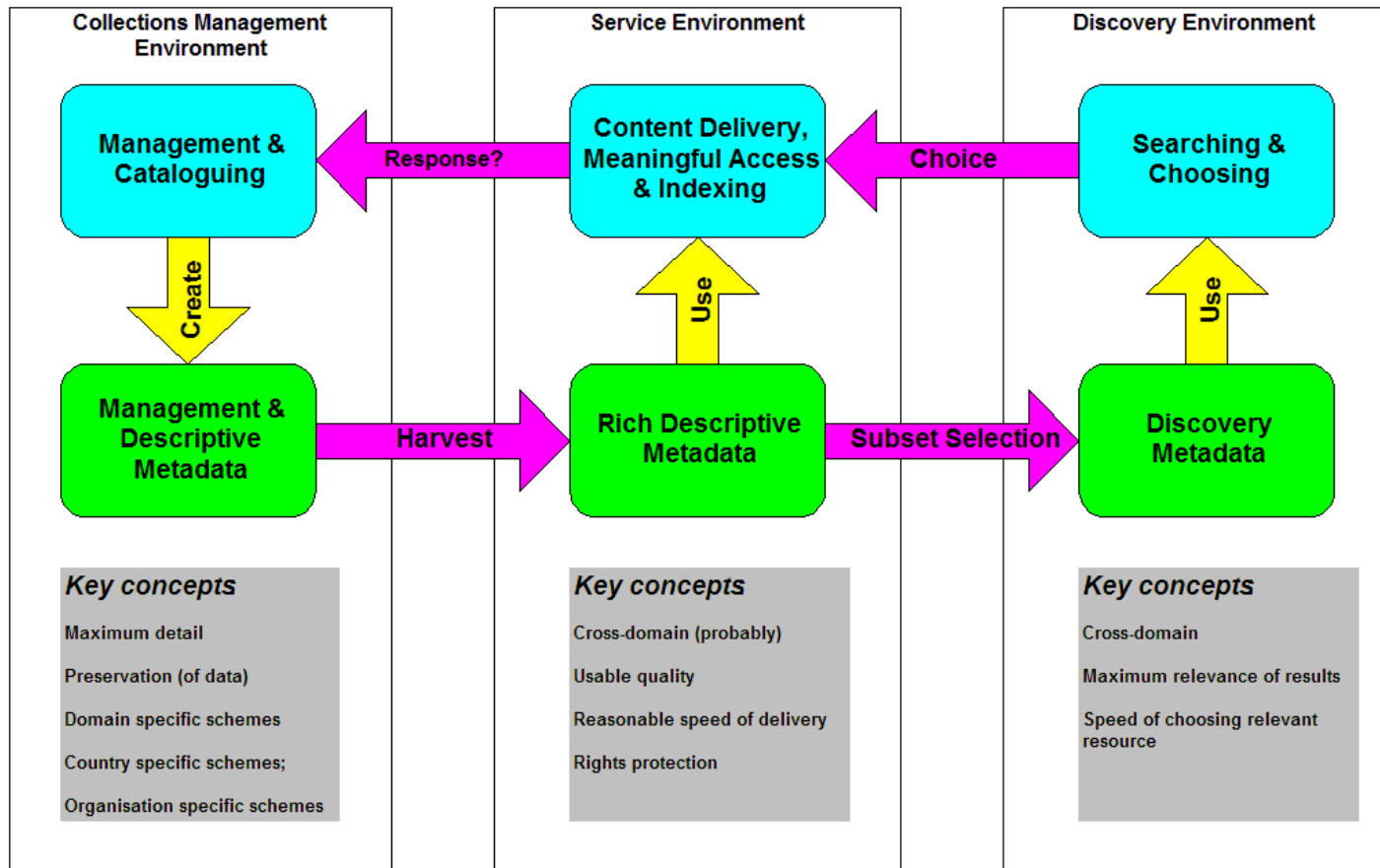
Access to cultural heritage
networks across Europe

Connections





Metadata use environments





ATHENA

Access to cultural heritage
networks across Europe

What is LIDO?





ATHENA

Access to cultural heritage
networks across Europe

LIDO Genesis

- Initiated by **ATHENA** project based on **museum needs**
- Joint effort of the **existing metadata communities**
- **2 years of implementation and use of metadata**
- Further **ontology analysis**
- Requirements of **collection management standard**



ATHENA

Access to cultural heritage
networks across Europe

Sources for LIDO

- **CDWA Lite**
 - **Indexing** elements
 - **Display** elements
- **CIDOC CRM**
 - **Event-oriented** model
- **museumdat**
 - **Practical** implementation – BAM Portal
 - **All areas** of cultural material
- **SPECTRUM (XML)**
 - Entities recorded with **relationships**: events, people, persons, organisations, places, locations, objects and subjects
 - **Rights** fully described
 - Different **language** versions supported flexibly



ATHENA

Access to cultural heritage
networks across Europe

LIDO Overview

- **LIDO – Light Information Describing Objects**
- **Harvesting** schema - Not basis for a collection management system
- Delivering metadata for **service environment**: Online collections database; Portal; Aggregations (e.g. Europeana)
- **Full range** of descriptive information about museum objects
- Nested set of **wrapper** and **set** elements - culturally significant data organisation
- **Data** elements which hold the information
- Information about the **sources for data** and **controlled terminology**



ATHENA

Access to cultural heritage
networks across Europe

LIDO – Descriptive 1

LIDO Area	Information recorded
<i>Object Identification</i>	Basic information about the object: <ul style="list-style-type: none">• Title (or object name if no title) [mandatory];• Inscriptions – transcript and/or description;• Repository – the organisation that holds the physical object and its identifier;• Display and edition information – especially for prints;• Description – descriptive text;• Measurements.
<i>Object Classification</i>	Information about the type of object: <ul style="list-style-type: none">• Object name [mandatory];• Other classification terms for the object – e.g. form, age, sex, status and phase.
<i>Object Relations</i>	Relation of the object to: <ul style="list-style-type: none">• Its subject (content or visual) – concepts, actors, events, dates, places, events, and objects;• Other objects.



ATHENA

Access to cultural heritage
networks across Europe

LIDO – Descriptive 2

LIDO Area	Information recorded
Event	<p>Events that the object has taken part in, such as:</p> <ul style="list-style-type: none">• Creation;• Field collection;• Acquisition;• Exhibition;• Use, etc. <p>For each event, information, if relevant, about:</p> <ul style="list-style-type: none">• Event ID;• Event type;• Object's role in the event;• Event name;• Actors (persons and organisations);• Cultures involved;• Dates (or periods);• Places;• Event method;• Materials and techniques used;• Other objects present at the event;• Related events;• Description of the event.



ATHENA

Access to cultural heritage
networks across Europe

LIDO – Administrative

LIDO Area	Information recorded
<i>Rights Work</i>	Information about the rights associated with the object, metadata and the digital surrogate being harvested into the service environment (especially copyright): <ul style="list-style-type: none">• Rights type;• Rights holder;• Rights dates;• Credit line.
<i>Record</i>	Basic information about the record: <ul style="list-style-type: none">• ID [mandatory];• Type;• Source;• Metadata about the record.
<i>Resource</i>	Information about digital resource being supplied to the service environment (e.g. Europeana): <ul style="list-style-type: none">• Link – URL of the resource;• Resource ID;• Relationship type – e.g. conservation, historical, reconstruction;• Resource type – its medium (e.g. x-ray);• Resource rights – of the resource where different from the object;• View description• View type – vantage point of the resource• View date• Resource source – if not from the holding organisation;• Related resources• Resource metadata location – pointer to other information about the resource.



ATHENA

Access to cultural heritage
networks across Europe

Implementing LIDO

- **Delivering content to Europeana:**
 - Support for **required data**: links, types, previews, providers
 - **Timetable** of delivery – Rhine and Danube
- **Close working with WP7:**
 - **Involvement** in LIDO development
 - Informed creation of **ATHENA system**
- **Use outside ATHENA:**
 - **MIMO** – musical instruments
 - **Europeana Judaica** – Jewish material
 - **National portals** – UK
 - **Europeana ?**